



CPR CLASSIC EAST, e Letter

Often copied, never duplicated, always late.

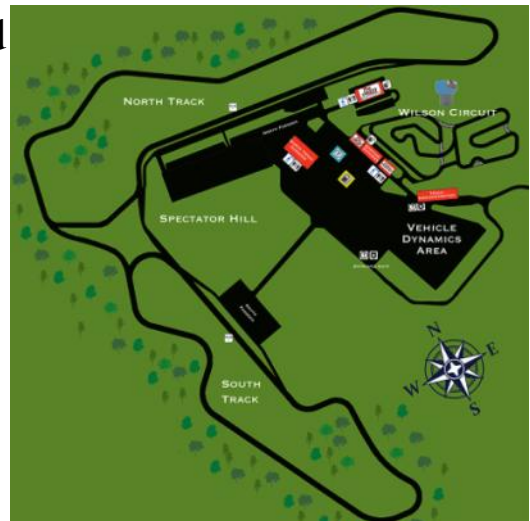
September 2018

FIRST OFF, lets get caught up on the racing exploits of Jack racing his CPR sponsored 944.

In Jack's own words:

Saturday I finished second in the Mid Atlantic PTE run group, but mid-pack overall. I was unjustly DQ'd for being underweight...their scales were WAY off! Sunday I finished 1st!

PITT is an outstanding race track, but challenging to just “show up and race”. The track has 16 turns, is over 3 miles long and very technical. It incorporates massive elevation changes and several blind turns that take a few sessions to really figure out. By the end of the day Sunday, I was fairly confident of the turn in and brake points, and I left PITT feeling like this is one of the most entertaining tracks on the east coast.



The 944 behaved well mechanically, but we were off on our suspension setup. Too much negative toe ended up being the culprit, but wasn't diagnosed until after the race. Turn in was very slow and sluggish. Even with sway bar adjustments, understeer was massive. With some rule changes, I switched from Hoosier R7 tires to Toyo RR's. The Hoosiers offer a bit more initial grip, which would have helped with some of the portions of the track as well.



CPR CLASSIC EAST, e Letter

Often copied, never duplicated, always late.

September 2018

We also had to carry a large amount of ballast for the weekend. The facility scales were having some issues, so at the risk of being DQ'd for being underweight, I put all our weights in and filled up the tank with fuel for additional ballast on Sunday. Post race, we scaled at 2800lbs...significantly over the 2779 required and much higher than our previously required 2749 lbs. In spite of our handling woes and high weight, we managed to be the first place car of our Mid Atlantic run group, and mid pack overall.

For our next two events, we will be preparing for the 2019 season and a move to ST6 class. This will allow us to drop ALL of the ballast and even find some other ways to shave weight including a lightweight battery. We should be able to come in at about 2475 lbs while running metallic bushings and Hoosier R7's. If the weather cooperates, I hope to run the fastest laps of my life at VIR(October 6/7) and Summit Point (November 10/11) and November (knock on wood!). Keeping a 35-year-old car competitive in an open class has been rewarding and a real testimony to the engineering that went into these machines to start with. Set up correctly, there are few machines out there (vintage or modern) that will handle as nicely as a 944.

Anyone who finds themselves at the track on these days is invited to swing by our paddock for a little R&R. Just look for the 1983 Bluebird Wanderlodge and the 1983 CPR/PRS Porsche 944. We're not hard to find!

Jack



CPR CLASSIC EAST, e Letter

Often copied, never duplicated, always late.

September 2018

JASON GALLO JOINS THE CPR TEAM!

I personally met Jason about 10 years ago while visiting the shop he was working in at the time. He had the talent and personality to be a CPR guy then. It was not until a few months ago that Jason and our General Manager, Josh Pritchett found the right timing for Jason to join the CPR Craftsmen, Troy and Ryan, in our Metal and Fabrication Shop.



Jason

Ryan

Troy



CPR CLASSIC EAST, e Letter

Often copied, never duplicated, always late.

September 2018

Jason joins CPR None to soon. The Metal Shop has exploded with three new 901 restoration projects soon to return from the Paint stripping and E coat process to begin the metal restoration phase.





CPR CLASSIC EAST, e Letter

Often copied, never duplicated, always late.

September 2018

CHROME CITY RIDE

CPR was the Easton, Maryland staging point for registration and journey up to the Benedictine School's 17th Annual Chrome City Ride, in Ridgely Maryland. This is a wonderful event with all proceeds going to the Special Needs children and adults at the Benedictine School. Truly a remarkable group of people and a worthwhile cause. CPR is honored to be a part of this event. The Day begins with a driving trip to the School from several locations, Easton being one such location. Participant cars are parked on the school grounds and can be judged for prizes if the driver wishes. Participant cars do not have to be judged. Once on campus, participants and guests are free to enjoy the day which includes a lunch and a tee shirt included in the entrant fee, live music, prize drawings and celebrity guests. This year's guests were Cindy Williams and Candy Clark, both from the film American Graffiti. Plan on attending next years event! www.benschool.org

CHESAPEAKE CLASSIC CAR CLUB, CRUISE IN

“*Cruise Ins*” have existed for years having begun as a trend in California decades ago. The premise of a “Cruise In” is simple; Car People cruising to a certain location to meet up with other Car People. It is all about the cars. Any type or condition of car is welcome. Socializing and enjoying each others car is a must.

Here on the Eastern Shore, we are extremely fortunate to have the Chesapeake Classic Car Club, a dedicated group guided by their President Gary Faulkner. Each year they have a fall and spring car show, with cruise ins the first Saturday of the month in the summer.

The August Cruise In featured car judging by the Kids from the Benedictine

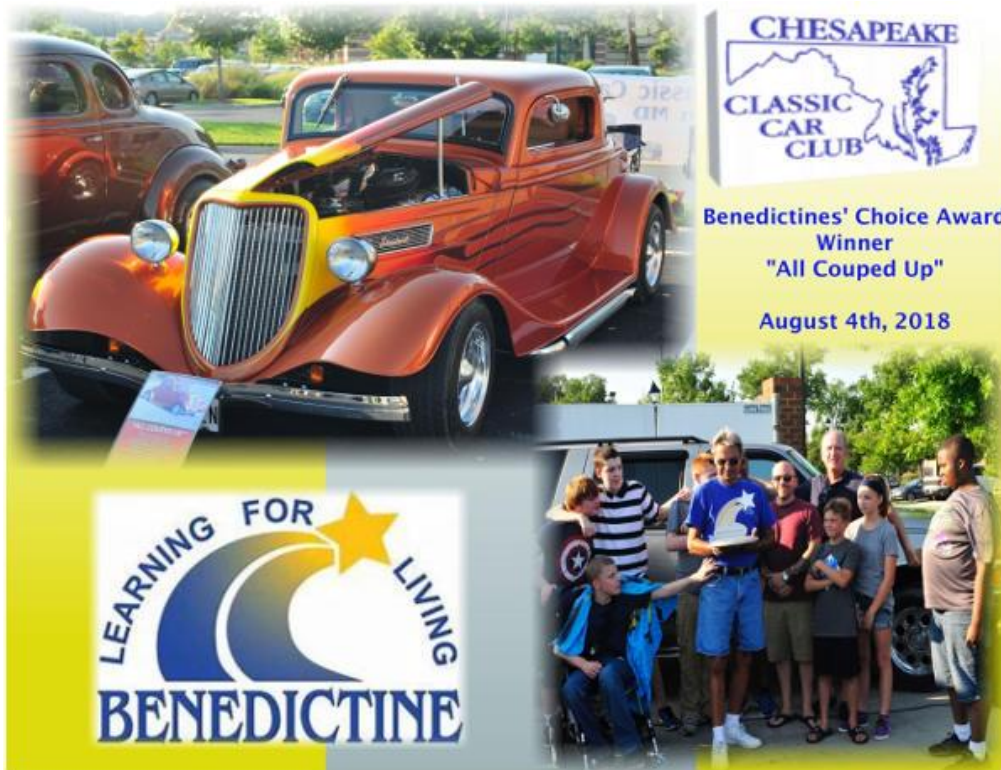


CPR CLASSIC EAST, e Letter

Often copied, never duplicated, always late.

September 2018

School with a special, one-of-a-kind “Benedictine Trophy.”
The Benedictine Trophy was designed and constructed by our own General Manager Josh Pritchett. Lenny Shaffer’s Car won the special Trophy.





CPR CLASSIC EAST, e Letter

Often copied, never duplicated, always late.

September 2018

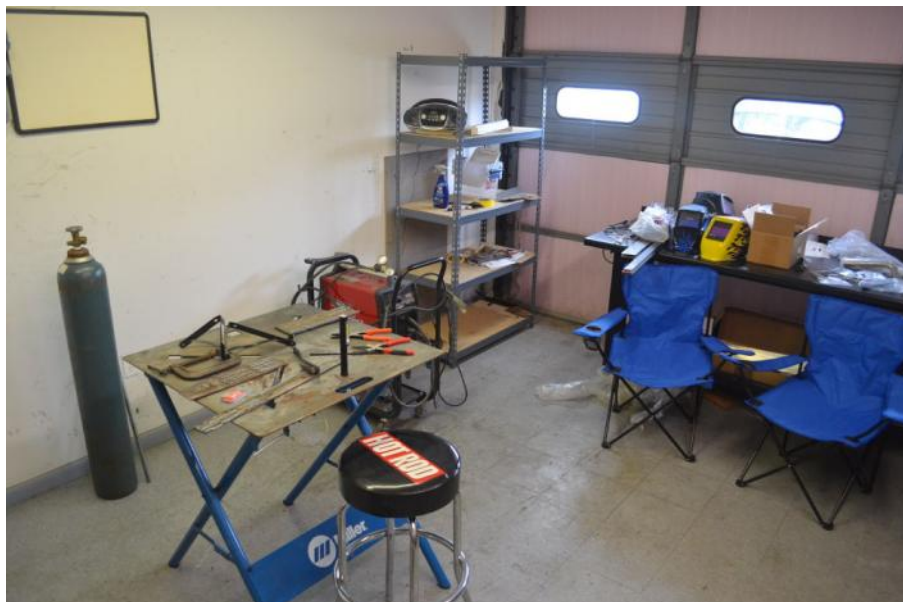
WORK FORCE TRAINING

CPR Vintage Porsche Restoration in collaboration with Mid Shore Recovering Veterans Group has its humble beginnings in helping our Military Veterans re-join the American Society they so bravely and gallantly defended.

CPR has committed a space in our shop and the expertise from our staff of craftsmen to instruct Veterans on the art of welding.

Royce Ball with the Mid Share Recovering Veterans Group states the Mission “We plan to invest our time and money to provide the skills necessary for our Veterans to return home, to re-join society, with work talents befitting them the dignity and honor they deserve.”

If you know a work ready Veteran who would benefit from this instruction call Royce at: 443 995 5908.





CPR CLASSIC EAST, e Letter

Often copied, never duplicated, always late.

September 2018

AS THE WEATHER COOLS...

Don't forget the CPR Reading Room. Available by appointment any Tuesday or Thursday. Jammed packed with Porsche and other Sports Car reading. Call now for a visit. We provide a comfy chair and coffee for your reading pleasure. 410-822-8322



CPR HAS JUST FINISHED COMPILING THE RESULTS OF THE 2018 MONTEREY FALL AUCTIONS.

Look for this auction compilation and comments on how this effect your Porsche's resale pricing in our next Sales Letter. If your are not subscribed to the CPR Sales Letter, sign up at: cpreclassicsaleseast.com



CPR CLASSIC EAST, e Letter

Often copied, never duplicated, always late.

September 2018

Notable up coming Events:

September 23, Chesapeake Classic Car Show annual event in Easton. All welcome. cccfeaston.org

October 7, Chesapeake Region PCA Eastern Shore Tour. For PCA members. Call Aniano at 443 832 3079

October 13, MSRVG "Variety Show for Veterans." at the Chesapeake College Todd Performing Arts Center. Tickets by email Royceball@mac.com or call Royce 443 995 5908.

October 18th-20, 356 Porsche Registry at the Simeone Museum in Philly. Contact: www.simeonemuseum.org

October 19, Benedictine Charity Golf Classic. Register online www.benschool.org



Until next time, thank you for your support!
"The CPR Crew"

CPR CLASSIC EAST
410 822 8322
cprclassiceast.com